

IGNITION COIL TROUBLESHOOTING GUIDE

1999-2001 2.0L Honda CR-V

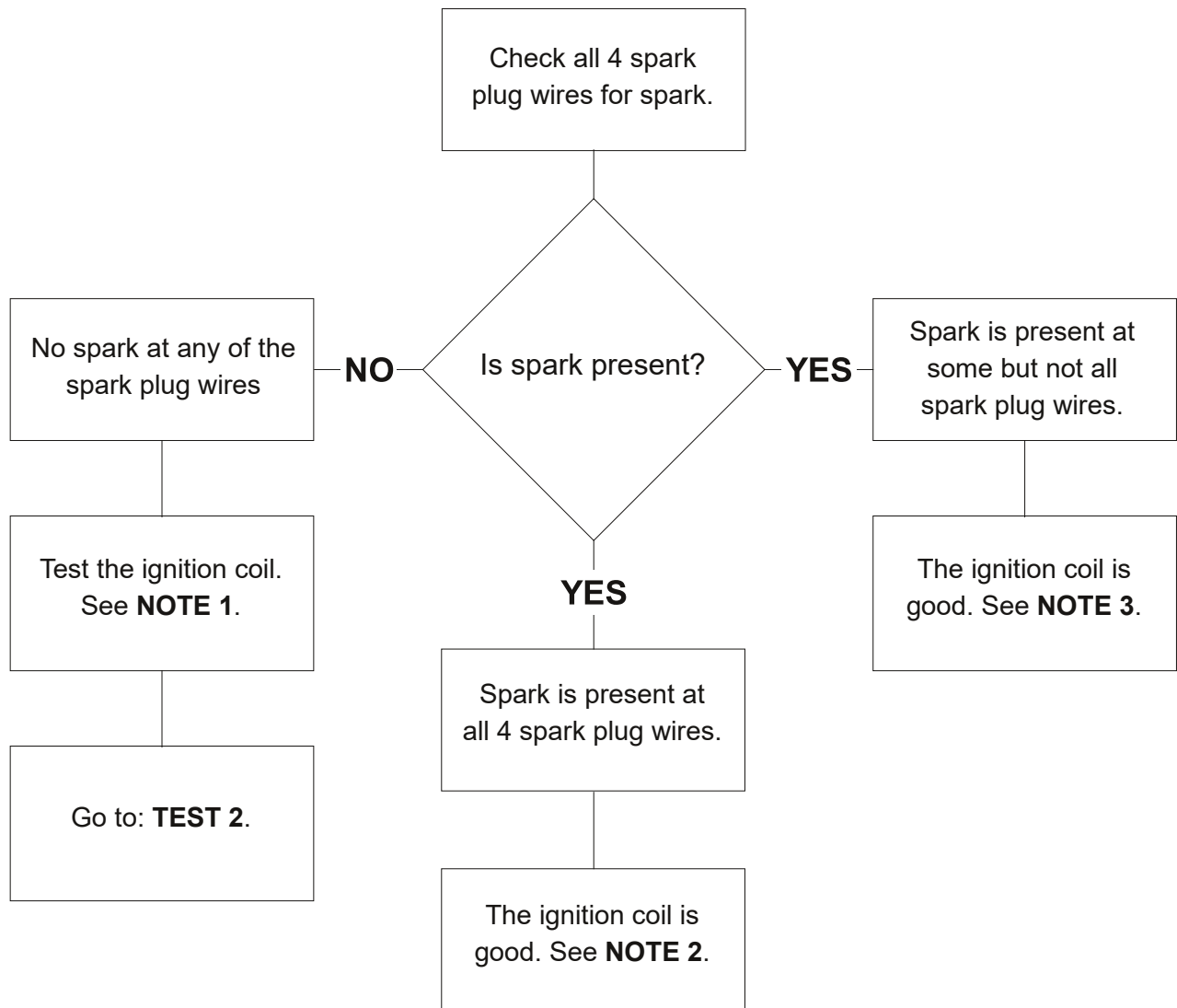
PRE-CHECK: Testing All Four Spark Plugs For Spark.....	2
TEST 1: IGNITION COIL SPARK TEST.....	3
TEST 2: IGNITION COIL POWER (12 V) TEST.....	4
TEST 3: IGNITION COIL ACTIVATION SIGNAL TEST.....	5
RESOURCES.....	6

Testing the ignition coil, to see if it's defective or not, on the 1999-2001 2.0L Honda CR-V is not difficult. With a few basic hand tools and a dedicated spark tester (like the OTC 6589 Electronic Ignition Spark Tester) you can test it yourself and save time and money.

In this guide you'll find the basic diagnostic flow of how I test the ignition coil explained in a step-by-step manner. To further help you, I've also created a youtube video that ties-in with this guide. The on-line tutorial at easyautodiagnosics.com will also help you.

If you're reading this guide on an electronic device (PC, laptop, etc), you can click on the links and open them in your device's default browser. The clickable links will have the following symbol: ↗.

At the end of this guide you'll find the links to more information and tutorials for the 1999-2001 2.0L Honda CR-V.



NOTE 1: This test result indicates that one of the following is defective:

- Distributor cap and rotor.
- Ignition coil.
- Ignition control module.

NOTE 2: This test result indicates that the following ARE working correctly:

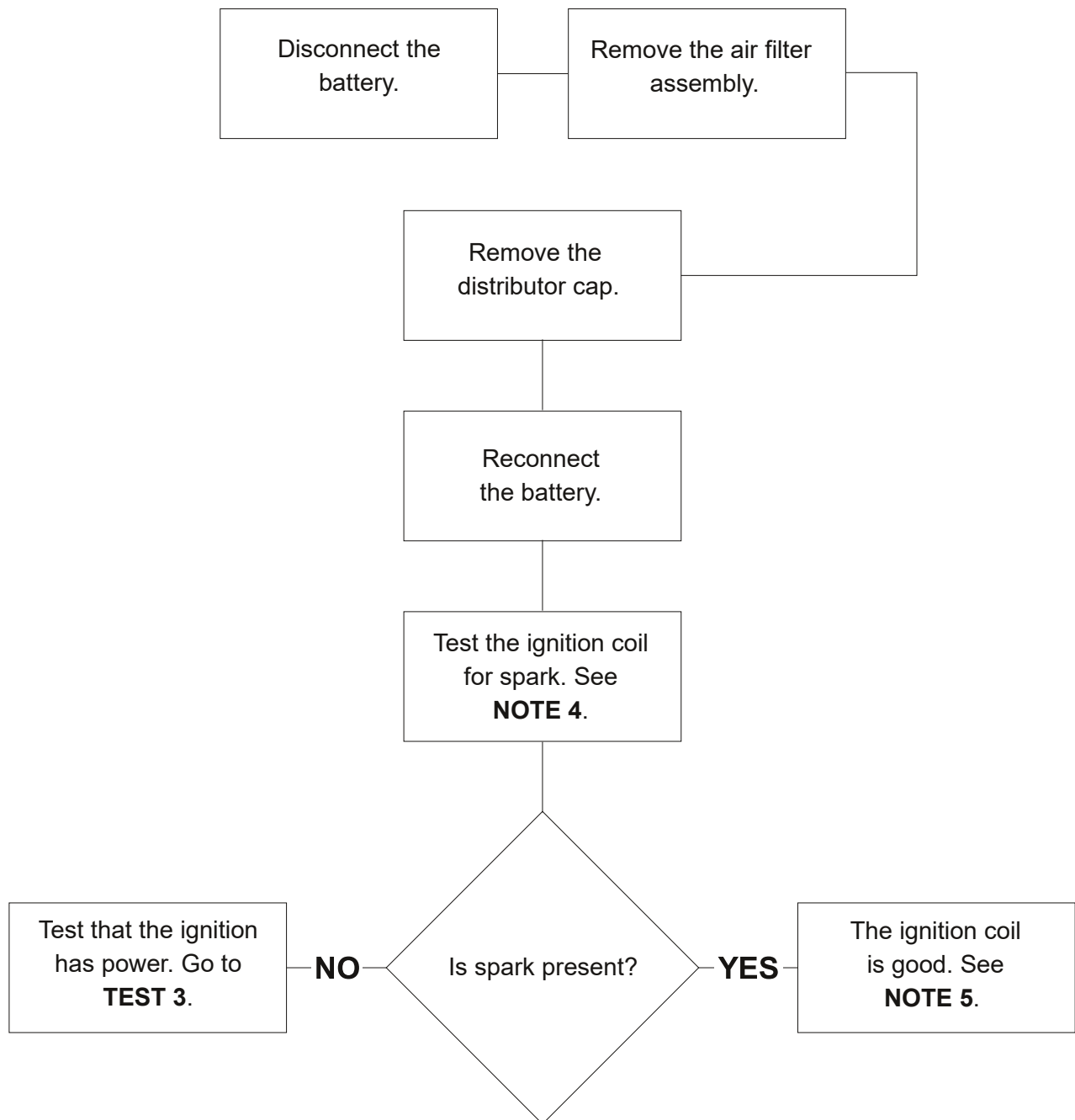
- Distributor cap and rotor.
- Spark plug wires.
- Ignition coil.
- Ignition control module.

If your Honda CR-V is not starting, then the fault is not in the ignition system.

NOTE 3: This test result confirms that the ignition coil is good but that one of the following is defective:

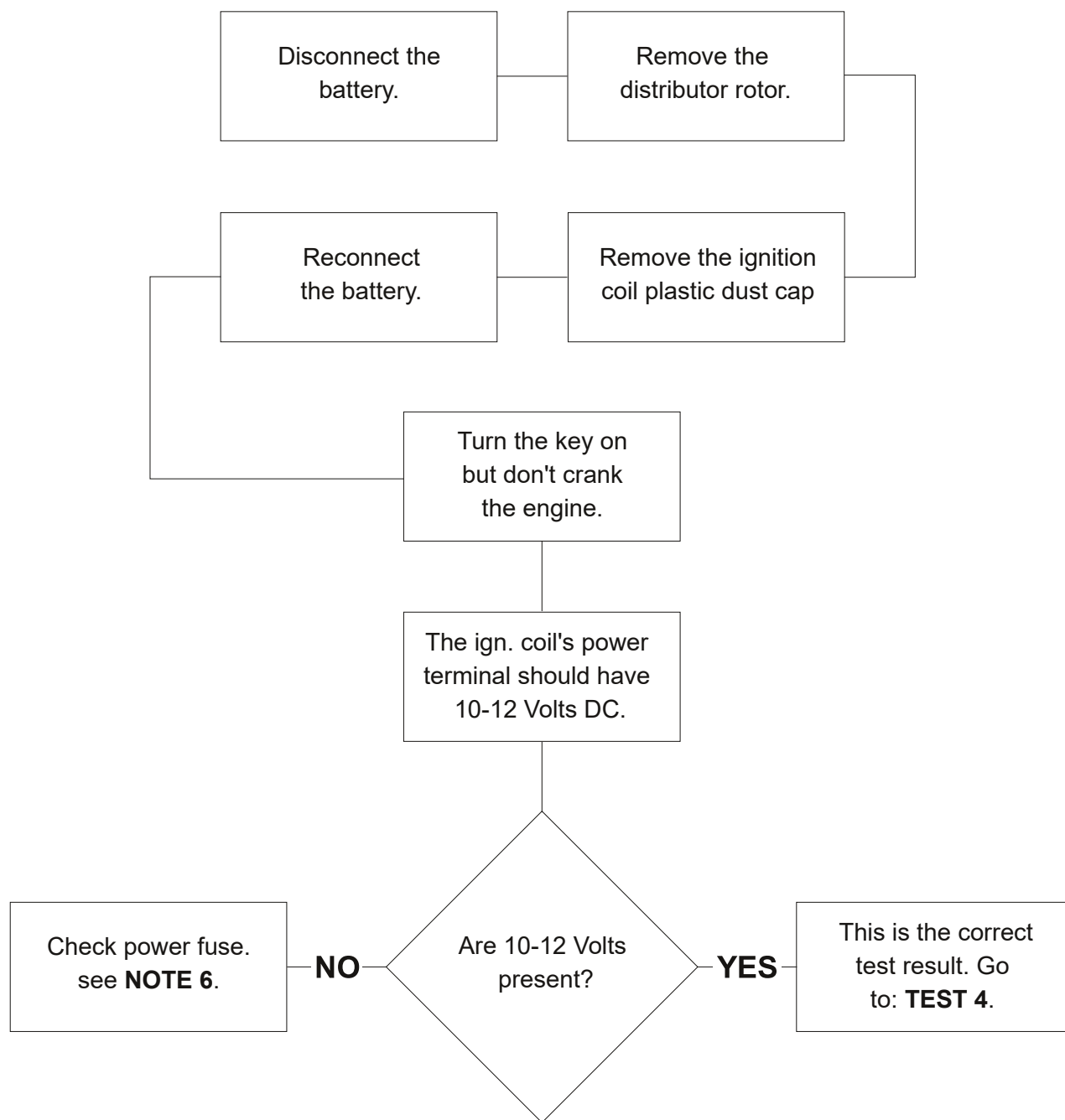
- Distributor cap.
- Spark plug wires.

It's common for one or more spark plug wires or distributor cap towers to wear out not spark.

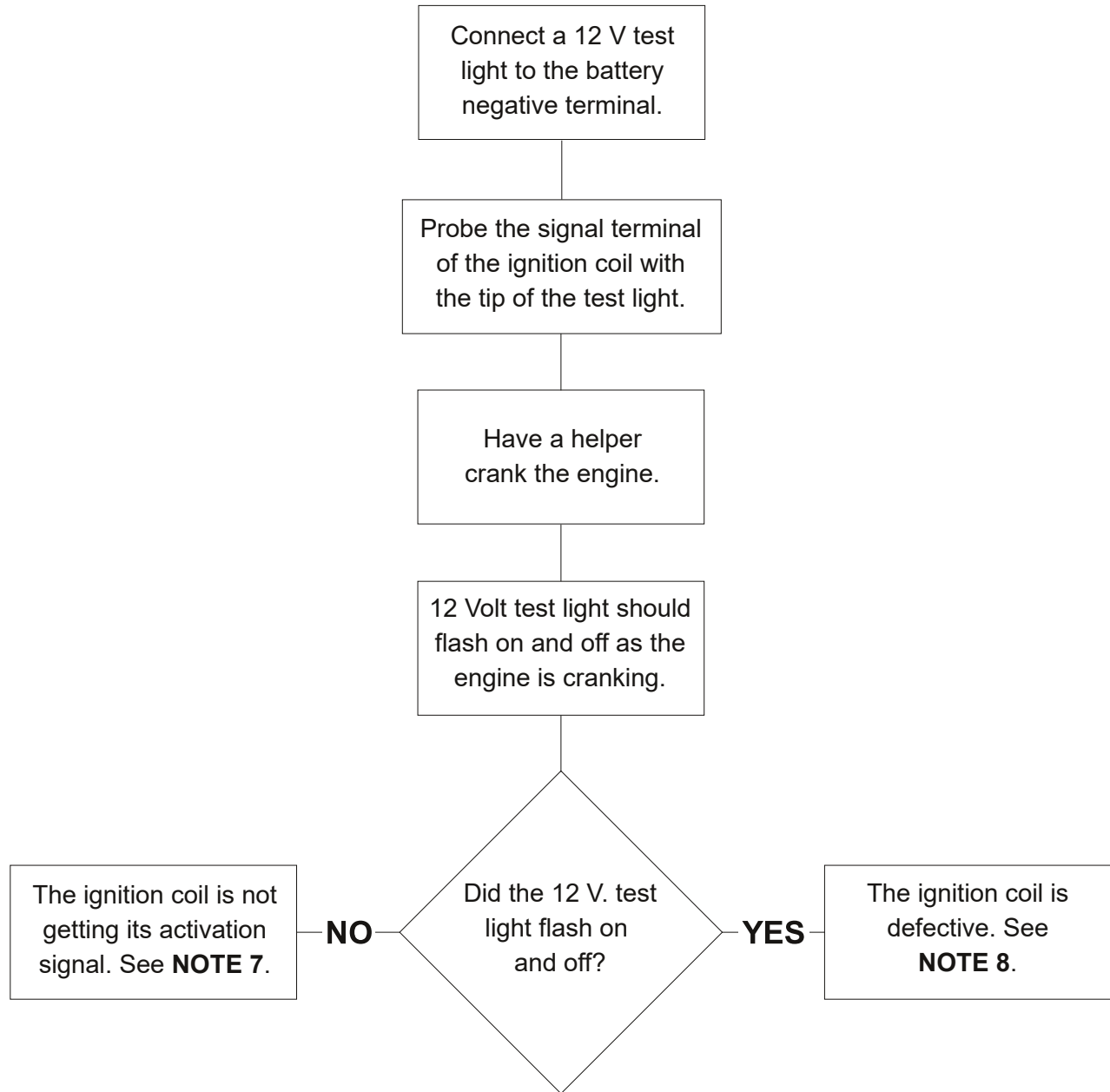


NOTE 4: To get the most accurate test result, the spark test should be done with a dedicated spark tester.

NOTE 5: If the engine is not starting, and you got NO spark at all 4 spark plug wires, then you can conclude that the distributor cap and rotor are defective and need to be replaced. Once the cap and rotor are replaced, the engine should start.



NOTE 6: Fuse #9 of the dash fuse box is the one that feeds power to the ignition coil.



NOTE 7: If the ignition coil does not get its activation signal, it's not gonna' spark. This is usually due to one of two reasons:

- Defective ignition control module.
- Defective CKP sensor.

Testing the ignition control module is not hard. You can find the tutorial here:

➤ <https://easyautodiagnosics.com/honda/2.0L/testing-the-icm-1>

NOTE 8: The ignition coil is only defective if it's:

- Not sparking.
- Is getting power.
- Is getting its activation signal.

The following resources are for the 1999, 2000, and 2001 2.0L Honda CR-V. If you're reading this PDF on an electronic device, you can click on the links.

Youtube video that explains the ignition coil test:

↗ https://www.youtube.com/watch?v=lcEsmK_V01I

Ignition coil test tutorial at easyautodiagnosics.com:

↗ <https://easyautodiagnosics.com/honda/2.0L/testing-the-ignition-coil-1>

Ignition control module test tutorial at easyautodiagnosics.com:

↗ <https://easyautodiagnosics.com/honda/2.0L/testing-the-icm-1>

Ignition system wiring diagram:

↗ <https://easyautodiagnosics.com/honda/2.0L/ignition-system-diagram-1>